

# CITYHEALTH<sup>®</sup>

by CITYCOLLECTION  
THE CORPORATE SHIRT SPECIALIST

The Shirt Specialist for  
Hospital, Aged Care and  
Allied Health Industries



2014/2015



# CITYHEALTH<sup>®</sup>

by CITYCOLLECTION  
THE CORPORATE SHIRT SPECIALIST

**Working in healthcare can mean long days filled with tasks of a very physical nature, lifting, reaching, bending, stretching and twisting.**

A garment that moves with you, absorbs moisture whilst maintaining a professional appearance is critical.

With our vast experience in servicing this industry, we have identified the factors that are most demanded by healthcare professionals:

- 1. Easy Care & Breathable Fabrics**
- 2. Comfort**
- 3. A Professional Appearance**
- 4. Durability**
- 5. A Range of Designs and Sizes**
- 6. Style and Practicality**
- 7. A Colour Story**
- 8. Quick Delivery**

Throughout this catalogue, we will guide you through how our garments are expertly designed to meet your needs.

*Shirts that work just as hard as you do!*

**COLOUR OPTIONS AVAILABLE**

GRAPE	4-9
TEAL	10-15
WHITE	16-19
BLUE	20-29
NAVY	30-35
AVOCADO	36-39
RED	40-45
CHARCOAL	46-49
FABRIC INDEX	50-54
SIZE GUIDE	55









# grape options

*you want*

## EASY CARE & BREATHABLE FABRICS

Garments that are easy to wear and easy to care for.

- Machine washable fabrics for everyday wear
- Quick drying fabrics for those who are time poor
- Fabrics that have an easy care finish, with minimal or no ironing required.





### CityHealth® Stripe

<b>2240</b>	<b>Short Sleeve</b>
<b>Size</b>	6 - 30
<b>Fabric</b>	55% Cotton, 45% Polyester
<b>Styling</b>	Wear In or Out, Wonder Button®, Shaped Hem
<b>Fit</b>	Semi-Fitted
<b>Colours</b>	Lilac, Blue

### CityHealth® Stripe

<b>4240</b>	<b>Short Sleeve</b>
<b>Size</b>	S - 5X
<b>Fabric</b>	55% Cotton, 45% Polyester
<b>Styling</b>	Pleated Back, Chest Pocket
<b>Fit</b>	City Fit
<b>Colours</b>	Lilac, Blue

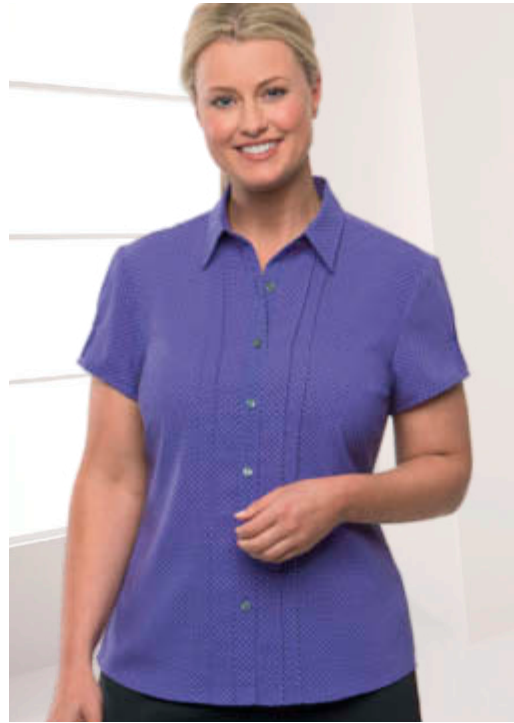
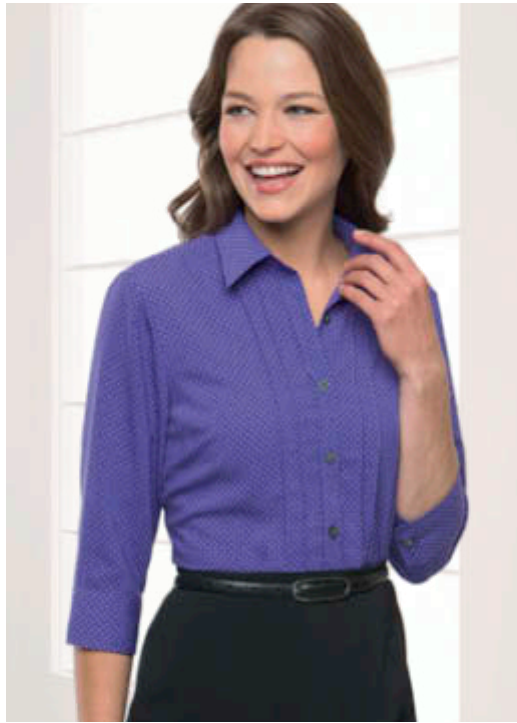
### Ezylin®

<b>2145</b>	<b>3/4 Sleeve</b>
<b>2146</b>	<b>Short Sleeve</b>
<b>Size</b>	6 - 30
<b>Fabric</b>	100% Breathable Polyester
<b>Styling</b>	Open Neckline, Shaped Hem
<b>Fit</b>	Semi-Fitted
<b>Colours</b>	Lilac, Avocado, Blue, Charcoal, Chilli, Chocolate, Denim, Hot Pink, Natural, Ocean, Red, Royal, Rust, Teal, White

### Ezylin®

<b>2146</b>	<b>Short Sleeve</b>
<b>2145</b>	<b>3/4 Sleeve</b>
<b>Size</b>	6 - 30
<b>Fabric</b>	100% Breathable Polyester
<b>Styling</b>	Open Neckline, Shaped Hem
<b>Fit</b>	Semi-Fitted
<b>Colours</b>	Lilac, Avocado, Blue, Charcoal, Chilli, Chocolate, Denim, Hot Pink, Natural, Ocean, Red, Royal, Rust, Teal, White





## Our fabrics are created to suit you

### Ezylin®

#### 100% Breathable Polyester.

Ezylin uses a unique yarn that quickly moves moisture away from the skin to the fabric surface, keeping you cool, dry and comfortable.

### City Stretch®

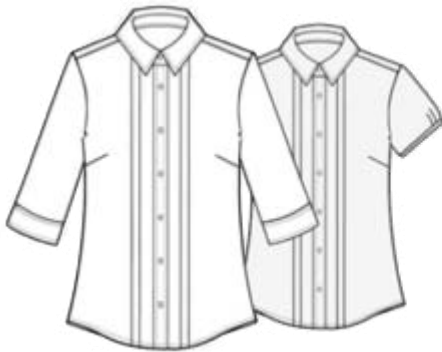
#### 100% Polyester with Natural Stretch.

A wrinkle free, lightweight, breathable fabric that you can simply wash and wear. Features a natural stretch that moves with you, without losing its shape.

### Pippa.

#### 100% Polyester Matte Jersey.

The fall of the soft knit fabric flatters all body shapes and sizes. The ultimate in comfort, style and easy care. Machine washable.



### City Stretch® Spot

<b>2172</b>	<b>3/4 Sleeve</b>
<b>2173</b>	<b>Cap Sleeve</b>
<b>Size</b>	6 - 30
<b>Fabric</b>	100% Polyester with Natural Stretch
<b>Styling</b>	Front Pintuck Feature, Adjustable Cuff, Wonder Button®
<b>Fit</b>	Semi-Fitted
<b>Colours</b>	Lilac, Black, Blue, Cobalt, Grape, Navy, Red, Teal

### City Stretch® Spot

<b>2173</b>	<b>Cap Sleeve</b>
<b>2172</b>	<b>3/4 Sleeve</b>
<b>Size</b>	6 - 30
<b>Fabric</b>	100% Polyester with Natural Stretch
<b>Styling</b>	Front Pintuck Feature, Wonder Button®
<b>Fit</b>	Semi-Fitted
<b>Colours</b>	Lilac, Black, Blue, Cobalt, Grape, Navy, Red, Teal



### CityHealth® Active

<b>2230</b>	<b>Short Sleeve</b>
<b>Size</b>	XXS - 5X
<b>Fabric</b>	100% Polyester Aerosilver
<b>Styling</b>	Wear Out, Roll Collar, Double Pockets
<b>Fit</b>	Semi-Fitted
<b>Colours</b>	Lilac, Navy, Red, Royal, Teal



### City Stretch® Spot

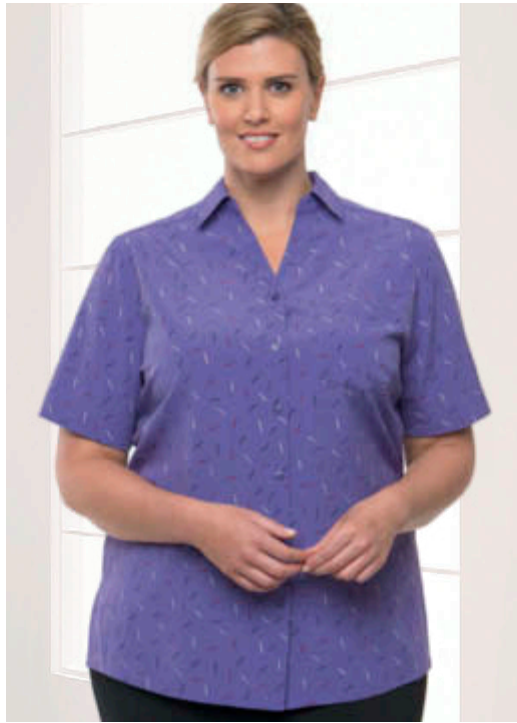
“

A lightweight  
breathable fabric  
that lets you  
move with ease.

”







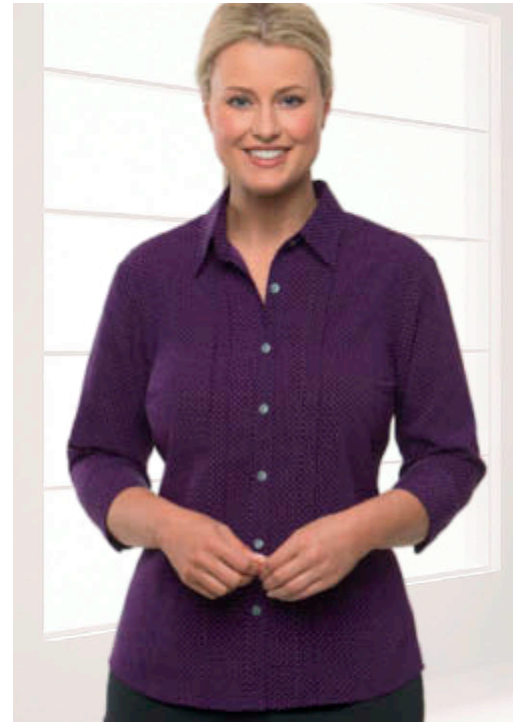
### Drift Print

<b>2192</b>	<b>Short Sleeve</b>
<b>Size</b>	6 - 30
<b>Fabric</b>	100% Polyester Aerosilver
<b>Styling</b>	Action Back, Feature Neckline, Wonder Button®
<b>Fit</b>	Action Fit
<b>Colours</b>	Lilac, Blue, Navy, Teal



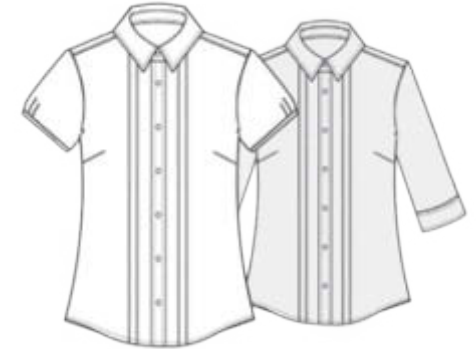
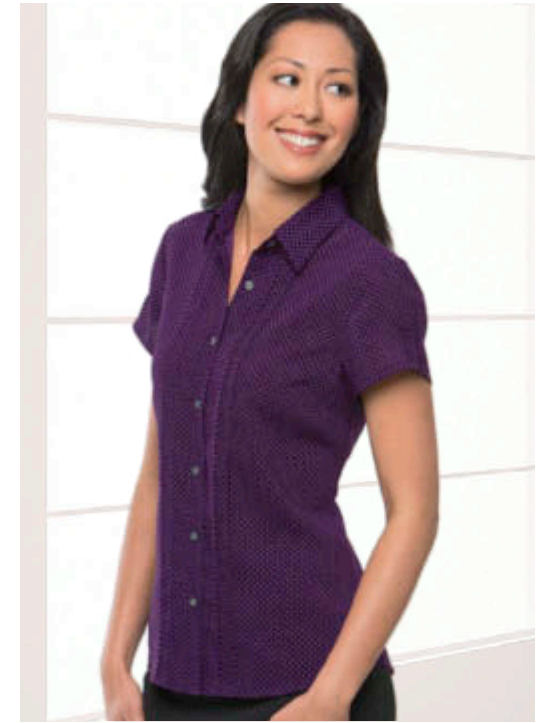
### Pippa

<b>2222</b>	<b>Short Sleeve</b>
<b>Size</b>	XXS - 4X
<b>Fabric</b>	100% Polyester Matte Jersey
<b>Styling</b>	Soft Draped Neckline with Gathered Front
<b>Fit</b>	Semi-Fitted
<b>Colours</b>	Grape, Black, Charcoal, Cobalt, Jade, Navy, Red, White



### City Stretch® Spot

<b>2172</b>	<b>3/4 Sleeve</b>
<b>2173</b>	<b>Cap Sleeve</b>
<b>Size</b>	6 - 30
<b>Fabric</b>	100% Polyester with Natural Stretch
<b>Styling</b>	Front Pintuck Feature, Adjustable Cuff, Wonder Button®
<b>Fit</b>	Semi-Fitted
<b>Colours</b>	Grape, Black, Blue, Cobalt, Lilac, Navy, Red, Teal



### City Stretch® Spot

<b>2173</b>	<b>Cap Sleeve</b>
<b>2172</b>	<b>3/4 Sleeve</b>
<b>Size</b>	6 - 30
<b>Fabric</b>	100% Polyester with Natural Stretch
<b>Styling</b>	Front Pintuck Feature, Wonder Button®
<b>Fit</b>	Semi-Fitted
<b>Colours</b>	Grape, Black, Blue, Cobalt, Lilac, Navy, Red, Teal



CityHealth  
RACHEL



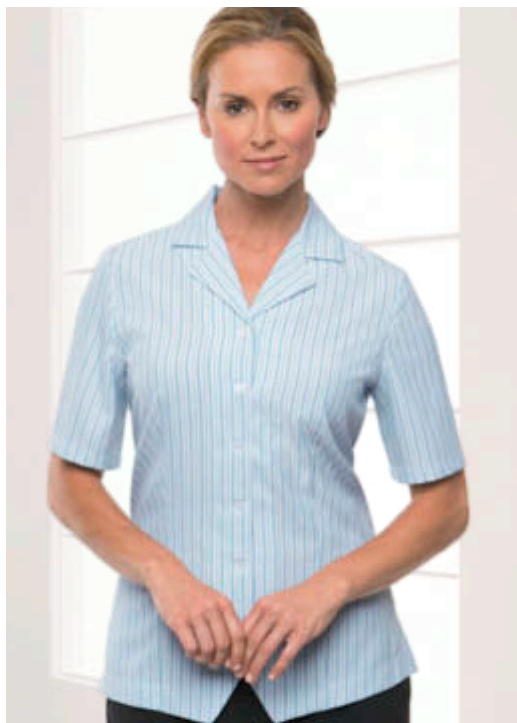
# teal options

*you want*

## COMFORT

With consideration to the physical nature of your role, we offer fabrics, styles and sizes that create comfortable and easy to wear garments.

- Stretch fabrics for the active work environment
- Quick drying fabrics for people on the go
- Breathable fabrics ideal for the physically active role
- Action back styles to accommodate stretching movements
- Side splits for extra comfort.



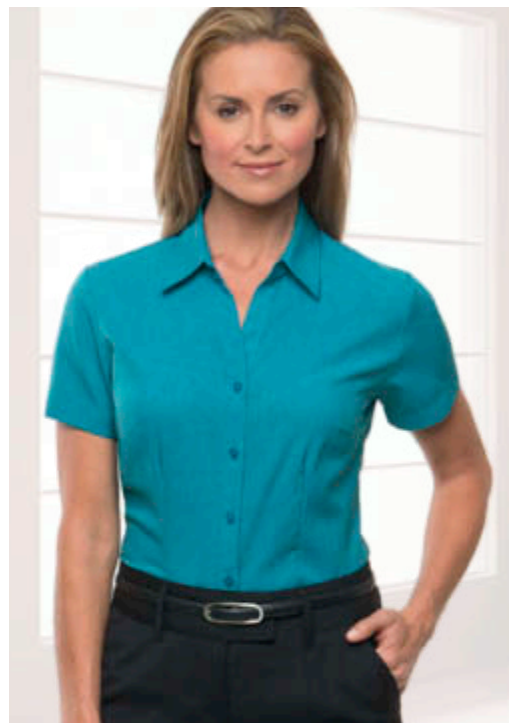
### Ezylin® Healthcare Stripe

<b>2153</b>	<b>Short Sleeve</b>
<b>Size</b>	6 - 30
<b>Fabric</b>	100% Breathable Polyester
<b>Styling</b>	Revere Collar, Action Back, Wonder Button®, Peak Bottom
<b>Fit</b>	Semi-Fitted
<b>Colours</b>	Teal, Avocado, Ocean, Red



### Ezylin®

<b>2145</b>	<b>3/4 Sleeve</b>
<b>2146</b>	<b>Short Sleeve</b>
<b>Size</b>	6 - 30
<b>Fabric</b>	100% Breathable Polyester
<b>Styling</b>	Open Neckline, Shaped Hem
<b>Fit</b>	Semi-Fitted
<b>Colours</b>	Teal, Avocado, Blue, Charcoal, Chilli, Chocolate, Denim, Hot Pink, Lilac, Natural, Ocean, Red, Royal, Rust, White



### Ezylin®

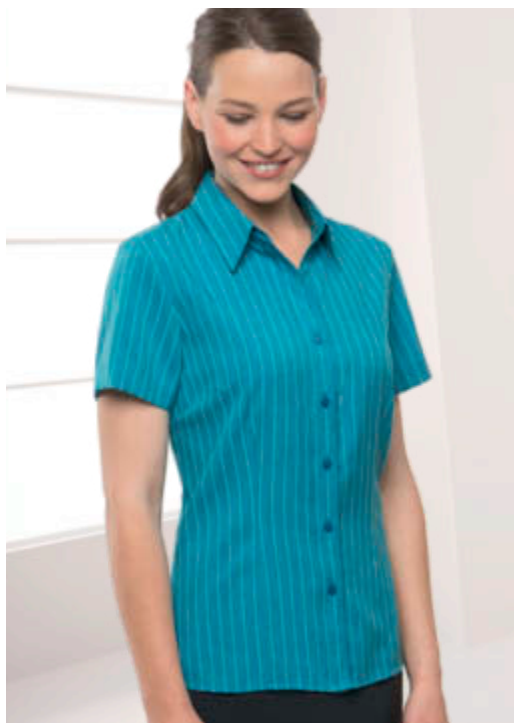
<b>2146</b>	<b>Short Sleeve</b>
<b>2145</b>	<b>3/4 Sleeve</b>
<b>Size</b>	6 - 30
<b>Fabric</b>	100% Breathable Polyester
<b>Styling</b>	Open Neckline, Shaped Hem
<b>Fit</b>	Semi-Fitted
<b>Colours</b>	Teal, Avocado, Blue, Charcoal, Chilli, Chocolate, Denim, Hot Pink, Lilac, Natural, Ocean, Red, Royal, Rust, White



### Ezylin® Overblouse

<b>2149</b>	<b>Short Sleeve</b>
<b>Size</b>	6 - 30
<b>Fabric</b>	100% Breathable Polyester
<b>Styling</b>	Revere Collar, Action Back, Wonder Button®, Peak Bottom
<b>Fit</b>	Semi-Fitted
<b>Colours</b>	Teal, Avocado, Blue, Ocean, Red, Royal, White





## New! CityHealth® Active

**Designed exclusively for healthcare professionals.**

### AeroSilver fabric.

A high performance fabric that helps regulate body temperature, keeping you cool, dry and comfortable.

The naturally acting antimicrobial yarn helps eliminate various harmful and odour causing germs.

### Practical design.

CityHealth® Active is ideal for physical environments, designed specifically to move with you. With exceptional fit and comfort, this garment flatters all body shapes and sizes.

### Innovation.

The superior fabric with moisture management, quick dry, stretch and anti-bacterial properties ensures the garment will work as hard as you do.



### Ezylin®

<b>4145</b>	<b>Short Sleeve</b>
<b>Size</b>	S - 5XL
<b>Fabric</b>	100% Breathable Polyester
<b>Styling</b>	Wear In or Out, Feature Yoke
<b>Fit</b>	Sports Fit
<b>Colours</b>	Teal, Charcoal, Denim, Royal, Rust



### Ezylin® Stripe

<b>2152</b>	<b>Short Sleeve</b>
<b>Size</b>	6 - 30
<b>Fabric</b>	100% Breathable Polyester
<b>Styling</b>	Open Neckline, Shaped Hem
<b>Fit</b>	Semi-Fitted
<b>Colours</b>	Teal, Avocado, Ocean, Red, Royal



### CityHealth® Active

<b>2230</b>	<b>Short Sleeve</b>
<b>Size</b>	XXS - 5X
<b>Fabric</b>	100% Polyester Aerosilver
<b>Styling</b>	Wear Out, Roll Collar, Double Pockets
<b>Fit</b>	Semi-Fitted
<b>Colours</b>	Teal, Lilac, Navy, Red, Royal



**Ezylin®**

“ A unique fabric  
that has the  
look of linen with  
outstanding easy care  
properties. ”







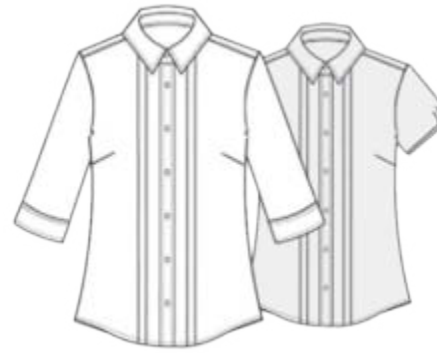
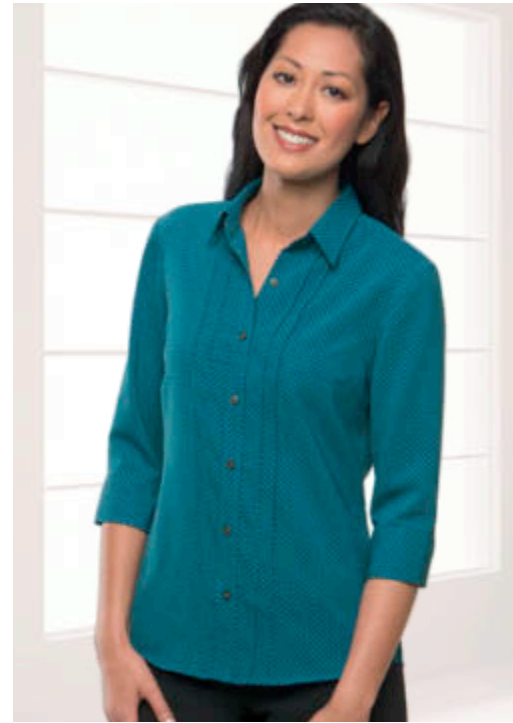
### Drift Print

<b>2192</b>	<b>Short Sleeve</b>
<b>Size</b>	6 - 30
<b>Fabric</b>	100% Polyester Aerosilver
<b>Styling</b>	Action Back, Feature Neckline Wonder Button®
<b>Fit</b>	Action Fit
<b>Colours</b>	Teal, Blue, Lilac, Navy



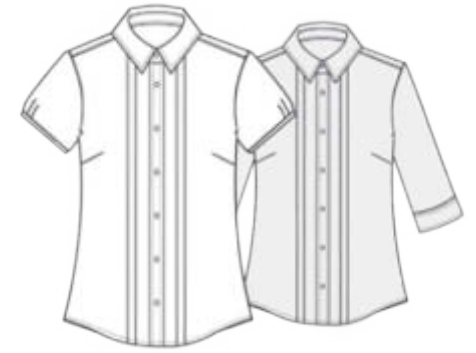
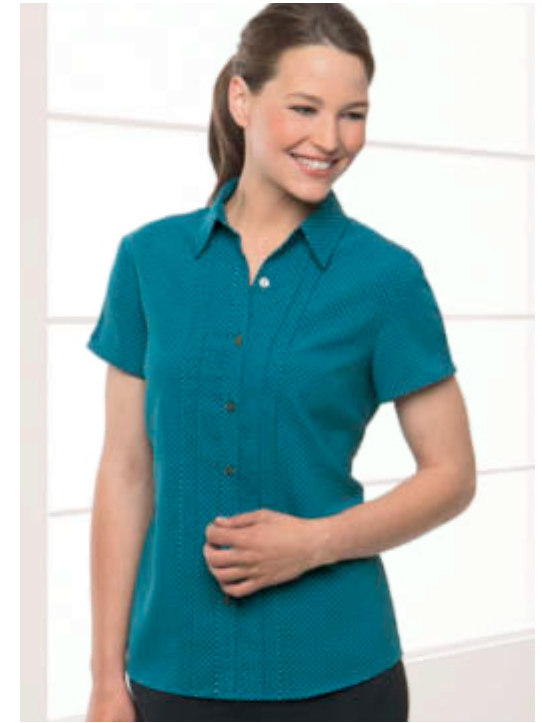
### Pippa

<b>2222</b>	<b>Short Sleeve</b>
<b>Size</b>	XXS - 4X
<b>Fabric</b>	100% Polyester Matte Jersey
<b>Styling</b>	Soft Draped Neckline with Gathered Front
<b>Fit</b>	Semi-Fitted
<b>Colours</b>	Jade, Black, Charcoal, Cobalt, Grape, Navy, Red, White



### City Stretch® Spot

<b>2172</b>	<b>3/4 Sleeve</b>
<b>2173</b>	<b>Cap Sleeve</b>
<b>Size</b>	6 - 30
<b>Fabric</b>	100% Polyester with Natural Stretch
<b>Styling</b>	Front Pintuck Feature, Adjustable Cuff, Wonder Button®
<b>Fit</b>	Semi-Fitted
<b>Colours</b>	Teal, Black, Blue, Cobalt, Grape, Lilac, Navy, Red



### City Stretch® Spot

<b>2173</b>	<b>Cap Sleeve</b>
<b>2172</b>	<b>3/4 Sleeve</b>
<b>Size</b>	6 - 30
<b>Fabric</b>	100% Polyester with Natural Stretch
<b>Styling</b>	Front Pintuck Feature, Wonder Button®
<b>Fit</b>	Semi-Fitted
<b>Colours</b>	Teal, Black, Blue, Cobalt, Grape, Lilac, Navy, Red





A man and a woman are standing in a bright, modern office hallway. The man, on the left, is wearing a white long-sleeved dress shirt, a light blue patterned tie, and dark trousers. He is holding a tablet in his right hand. The woman, on the right, is wearing a light blue short-sleeved button-down shirt with a subtle pattern and dark trousers. She has her hands on her hips. The background shows a clean, well-lit office environment with glass railings and a staircase.

white options

*you want*

## A PROFESSIONAL APPEARANCE

When bending, lifting, reaching and twisting is part of your work day, demand a shirt that maintains a professional appearance all day.

- Wrinkle free fabrics that look fresh throughout the day
- Cotton blends designed to make garments comfortable, lightweight and breathable
- High quality fabric that lasts longer and maintains its shape.

# white options



## Corporate Essential

<b>2100</b>	<b>3/4 Sleeve with Roll Up Feature</b>
<b>Size</b>	6 - 26
<b>Fabric</b>	65% Polyester, 35% Cotton
<b>Styling</b>	Placket Front, Wonder Button®, Roll Up Sleeve Option, Shaped Hem
<b>Fit</b>	Semi-Fitted
<b>Colours</b>	White, Sky, Charcoal

## Corporate Essential

<b>4100 SS</b>	<b>Short Sleeve</b>
<b>4100 LS</b>	<b>Long Sleeve</b>
<b>Size</b>	38 - 46, 48, 50, 52
<b>Fabric</b>	65% Polyester, 35% Cotton
<b>Styling</b>	Regular Collar, Placket Front Single Chest Pocket
<b>Fit</b>	Tailored Fit
<b>Colours</b>	White, Sky, Charcoal

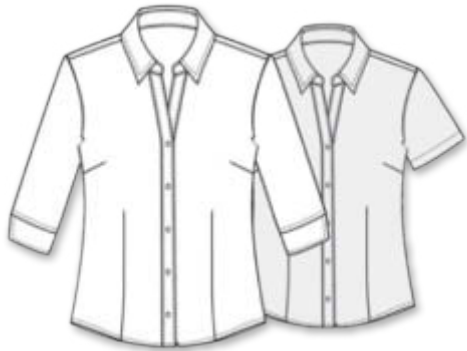
## Corporate Essential

<b>4100 LS</b>	<b>Long Sleeve</b>
<b>4100 SS</b>	<b>Short Sleeve</b>
<b>Size</b>	38 - 46, 48, 50, 52
<b>Fabric</b>	65% Polyester, 35% Cotton
<b>Styling</b>	Regular Collar, Placket Front Single Chest Pocket
<b>Fit</b>	Tailored Fit
<b>Colours</b>	White, Sky, Charcoal

## Pippa Print

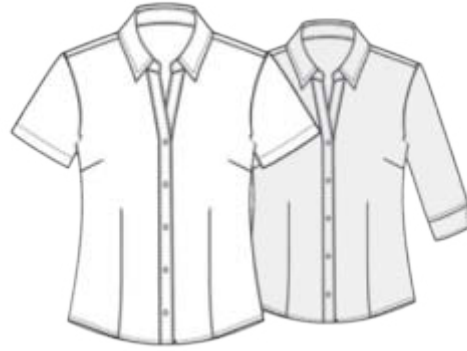
<b>2223</b>	<b>3/4 Sleeve</b>
<b>2224</b>	<b>Short Sleeve</b>
<b>Size</b>	XXS - 4X
<b>Fabric</b>	94% Polyester, 6% Spandex
<b>Styling</b>	Soft Draped Neckline with Gathered Front
<b>Fit</b>	Semi-Fitted
<b>Colours</b>	White Print





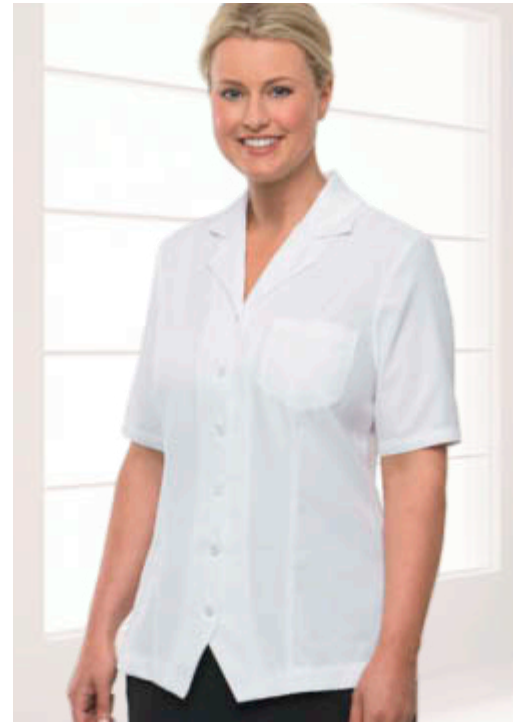
#### Ezylin®

<b>2145</b>	<b>3/4 Sleeve</b>
<b>2146</b>	<b>Short Sleeve</b>
<b>Size</b>	6 - 30
<b>Fabric</b>	100% Breathable Polyester
<b>Styling</b>	Open Neckline, Shaped Hem
<b>Fit</b>	Semi-Fitted
<b>Colours</b>	White, Avocado, Blue, Charcoal, Chilli, Chocolate, Denim, Hot Pink, Lilac, Natural, Ocean, Red, Royal, Rust, Teal



#### Ezylin®

<b>2146</b>	<b>Short Sleeve</b>
<b>2145</b>	<b>3/4 Sleeve</b>
<b>Size</b>	6 - 30
<b>Fabric</b>	100% Breathable Polyester
<b>Styling</b>	Open Neckline, Shaped Hem
<b>Fit</b>	Semi-Fitted
<b>Colours</b>	White, Avocado, Blue, Charcoal, Chilli, Chocolate, Denim, Hot Pink, Lilac, Natural, Ocean, Red, Royal, Rust, Teal



#### Ezylin® Overblouse

<b>2149</b>	<b>Short Sleeve</b>
<b>Size</b>	6 - 30
<b>Fabric</b>	100% Breathable Polyester
<b>Styling</b>	Revere Collar, Action Back, Wonder Button®, Peak Bottom
<b>Fit</b>	Semi-Fitted
<b>Colours</b>	White, Avocado, Blue, Ocean, Red, Royal, Teal



#### Pippa

<b>2222</b>	<b>Short Sleeve</b>
<b>Size</b>	XXS - 4X
<b>Fabric</b>	100% Polyester Matte Jersey
<b>Styling</b>	Soft Draped Neckline with Gathered Front
<b>Fit</b>	Semi-Fitted
<b>Colours</b>	White, Black, Charcoal, Cobalt, Grape, Jade, Navy, Red





# blue options

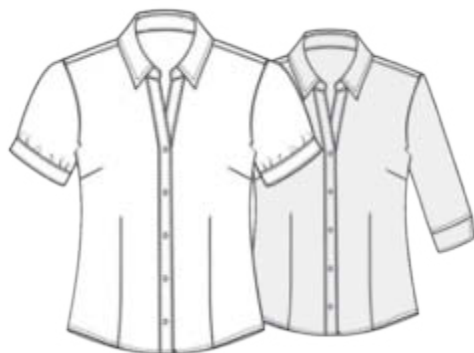
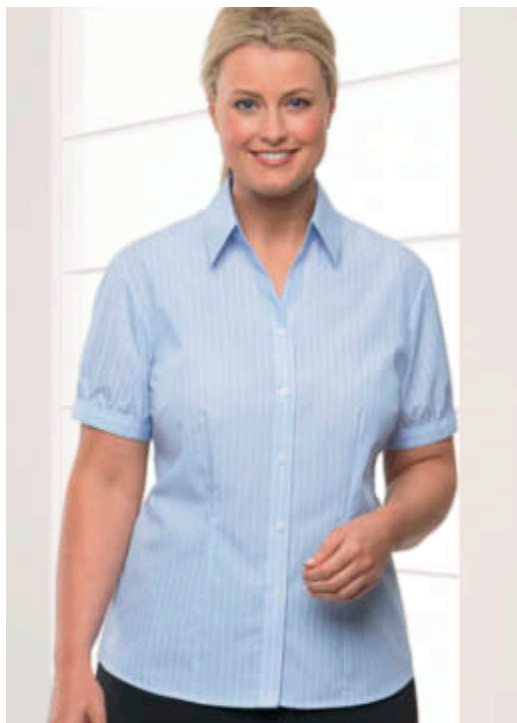
*you want*

## DURABILITY

Hard wearing fabrics with long lasting quality ensure our garments will work just as hard as you do.

- Specific materials selected for their durable features
- Quality stitching and design to remain strong, even in a demanding work environment
- High quality fabrics that last longer and maintain shape
- Minimal or no ironing required.





#### Shadow Stripe

<b>2104</b>	<b>Cap Sleeve</b>
<b>2144</b>	<b>3/4 Sleeve</b>
<b>Size</b>	6 - 30
<b>Fabric</b>	55% Cotton, 45% Polyester
<b>Styling</b>	Open Neckline, Wonder Button® Adjustable Cuff, Shaped Hem
<b>Fit</b>	Semi-Fitted
<b>Colours</b>	Blue, Charcoal



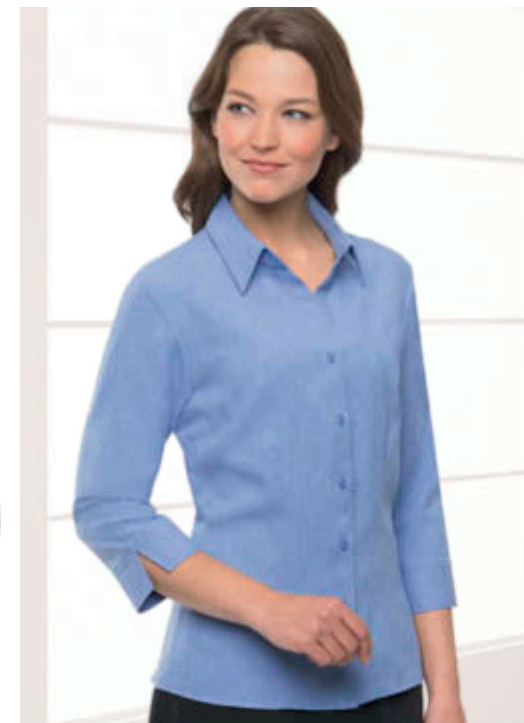
#### Shadow Stripe

<b>2144</b>	<b>3/4 Sleeve</b>
<b>2104</b>	<b>Cap Sleeve</b>
<b>Size</b>	6 - 30
<b>Fabric</b>	55% Cotton, 45% Polyester
<b>Styling</b>	Open Neckline, Wonder Button® Shaped Hem
<b>Fit</b>	Semi-Fitted
<b>Colours</b>	Blue, Charcoal



#### Shadow Stripe

<b>4104 LS</b>	<b>Long Sleeve</b>
<b>4104 SS</b>	<b>Short Sleeve</b>
<b>Size</b>	S - 5XL
<b>Fabric</b>	55% Cotton, 45% Polyester
<b>Styling</b>	Semi-Spread Collar, Chest Pocket, Placket Front
<b>Fit</b>	Classic
<b>Colours</b>	Blue, Charcoal



#### Ezylin®

<b>2145</b>	<b>3/4 Sleeve</b>
<b>2146</b>	<b>Short Sleeve</b>
<b>Size</b>	6 - 30
<b>Fabric</b>	100% Breathable Polyester
<b>Styling</b>	Open Neckline, Shaped Hem
<b>Fit</b>	Semi-Fitted
<b>Colours</b>	Blue, Avocado, Charcoal, Chilli, Chocolate, Denim, Hot Pink, Lilac, Natural, Ocean, Red, Royal, Rust, Teal, White





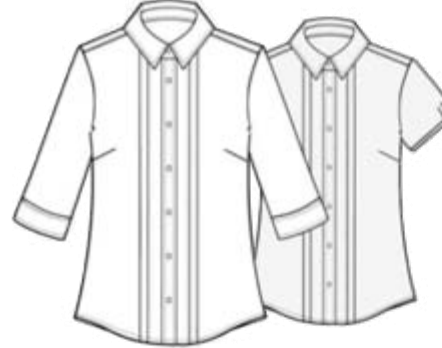
### Ezylin®

<b>2146</b>	<b>Short Sleeve</b>
<b>2145</b>	<b>3/4 Sleeve</b>
<b>Size</b>	6 - 30
<b>Fabric</b>	100% Breathable Polyester
<b>Styling</b>	Open Neckline, Shaped Hem
<b>Fit</b>	Semi-Fitted
<b>Colours</b>	Blue, Avocado, Charcoal, Chilli, Chocolate, Denim, Hot Pink, Lilac, Natural, Ocean, Red, Royal, Rust, Teal, White



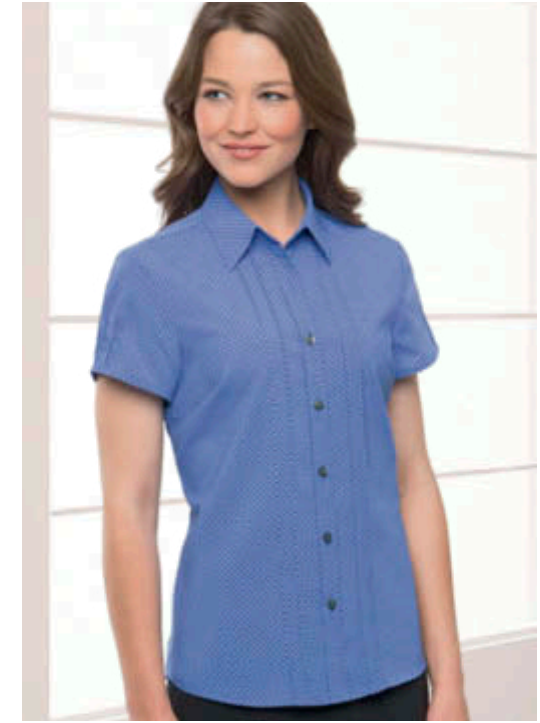
### Ezylin® Overblouse

<b>2149</b>	<b>Short Sleeve</b>
<b>Size</b>	6 - 30
<b>Fabric</b>	100% Breathable Polyester
<b>Styling</b>	Revere Collar, Action Back, Wonder Button®, Peak Bottom
<b>Fit</b>	Semi-Fitted
<b>Colours</b>	Blue, Avocado, Ocean, Red, Royal, Teal, White



### City Stretch® Spot

<b>2172</b>	<b>3/4 Sleeve</b>
<b>2173</b>	<b>Cap Sleeve</b>
<b>Size</b>	6 - 30
<b>Fabric</b>	100% Polyester with Natural Stretch
<b>Styling</b>	Front Pintuck Feature, Adjustable Cuff, Wonder Button®
<b>Fit</b>	Semi-Fitted
<b>Colours</b>	Blue, Black, Cobalt, Grape, Lilac Navy, Red, Teal



### City Stretch® Spot

<b>2173</b>	<b>Cap Sleeve</b>
<b>2172</b>	<b>3/4 Sleeve</b>
<b>Size</b>	6 - 30
<b>Fabric</b>	100% Polyester with Natural Stretch
<b>Styling</b>	Front Pintuck Feature, Wonder Button®
<b>Fit</b>	Semi-Fitted
<b>Colours</b>	Blue, Black, Cobalt, Grape, Lilac Navy, Red, Teal



### CityHealth® Stripe

<b>2240</b>	<b>Short Sleeve</b>
<b>Size</b>	6 - 30
<b>Fabric</b>	55% Cotton, 45% Polyester
<b>Styling</b>	Wear In or Out, Wonder Button®, Shaped Hem
<b>Fit</b>	Semi-Fitted
<b>Colours</b>	Blue, Lilac



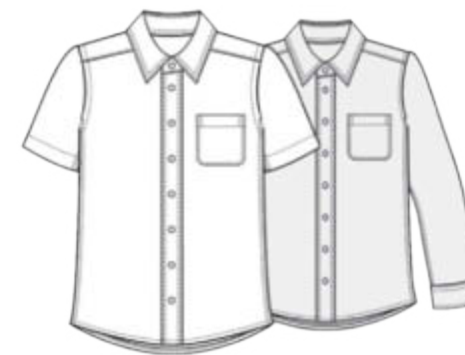
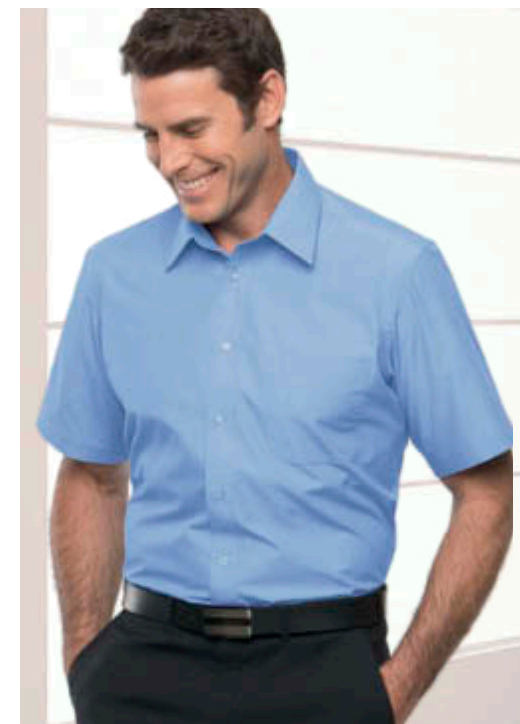
### CityHealth® Stripe

<b>4240</b>	<b>Short Sleeve</b>
<b>Size</b>	S - 5XL
<b>Fabric</b>	55% Cotton, 45% Polyester
<b>Styling</b>	Pleated Back, Single Chest Pocket
<b>Fit</b>	City Fit
<b>Colours</b>	Blue, Lilac



### Corporate Essential

<b>2100</b>	<b>3/4 Sleeve with Roll Up Feature</b>
<b>Size</b>	6 - 26
<b>Fabric</b>	65% Polyester, 35% Cotton
<b>Styling</b>	Placket Front, Wonder Button®, Roll Up Sleeve Option, Shaped Hem
<b>Fit</b>	Semi-Fitted
<b>Colours</b>	Sky, Charcoal, White



### Corporate Essential

<b>4100 SS</b>	<b>Short Sleeve</b>
<b>4100 LS</b>	<b>Long Sleeve</b>
<b>Size</b>	38 - 46, 48, 50, 52
<b>Fabric</b>	65% Polyester, 35% Cotton
<b>Styling</b>	Regular Collar, Placket Front Single Chest Pocket
<b>Fit</b>	Tailored Fit
<b>Colours</b>	Sky, Charcoal, White





### Micro Check

<b>2121</b>	<b>3/4 Sleeve</b>
<b>Size</b>	6 - 30
<b>Fabric</b>	55% Cotton, 45% Polyester
<b>Styling</b>	Button Through Front, Fold Back Cuff Option, Curved Hem
<b>Fit</b>	Semi-Fitted
<b>Colours</b>	Blue, Navy



### Micro Check

<b>4102 SS</b>	<b>Short Sleeve</b>
<b>4102 LS</b>	<b>Long Sleeve</b>
<b>Size</b>	S - 5XL
<b>Fabric</b>	55% Cotton, 45% Polyester
<b>Styling</b>	Button Down Collar, Single Chest Pocket, Twin Needle Construction
<b>Fit</b>	Full Cut
<b>Colours</b>	Blue, Navy



### CityHealth® Active

<b>2230</b>	<b>Short Sleeve</b>
<b>Size</b>	XXS - 5X
<b>Fabric</b>	100% Polyester Aerosilver
<b>Styling</b>	Wear Out, Roll Collar, Double Pockets
<b>Fit</b>	Semi-Fitted
<b>Colours</b>	Royal, Lilac, Navy, Red, Teal

## Design and finishes

**Helping you meet the demands of the day.**

### Range of styles.

Styles are designed to be easy to wear, flattering to all shapes and sizes and available in a versatile colour palette complementing any team environment.

### Fabrics.

The fabrics have been carefully researched and developed to ensure the styles are quick drying, require minimal ironing and are durable, cool and comfortable to wear.

### Wonder Button®

Featured in selected styles, the innovative Wonder Button® is the perfect solution to eliminate bust gaping.

The Wonder Button® provides that extra support and coverage to ensure you look professional and feel comfortable everyday.



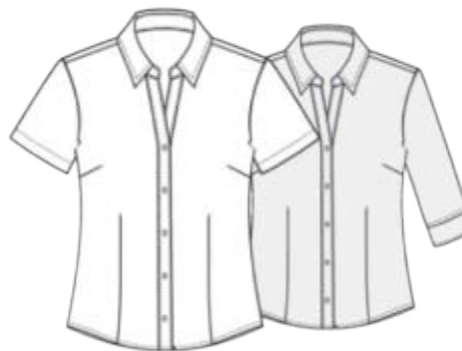
#### Ezylin® Healthcare Stripe

<b>2153</b>	<b>Short Sleeve</b>
<b>Size</b>	6 - 30
<b>Fabric</b>	100% Breathable Polyester
<b>Styling</b>	Revere Collar, Action Back, Wonder Button®, Peak Bottom
<b>Fit</b>	Semi-Fitted
<b>Colours</b>	Ocean, Avocado, Red, Teal



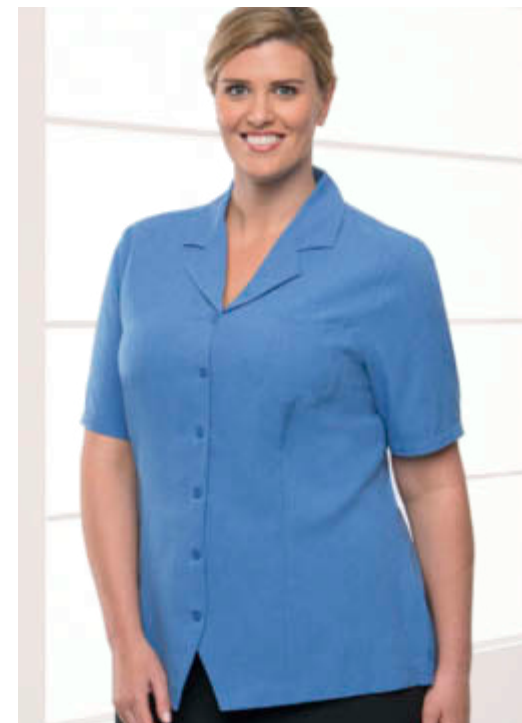
#### Ezylin® Stripe

<b>2152</b>	<b>Short Sleeve</b>
<b>Size</b>	6 - 30
<b>Fabric</b>	100% Breathable Polyester
<b>Styling</b>	Open Neckline, Shaped Hem
<b>Fit</b>	Semi-Fitted
<b>Colours</b>	Ocean, Avocado, Red, Royal, Teal



#### Ezylin®

<b>2146</b>	<b>Short Sleeve</b>
<b>2145</b>	<b>3/4 Sleeve</b>
<b>Size</b>	6 - 30
<b>Fabric</b>	100% Breathable Polyester
<b>Styling</b>	Open Neckline, Shaped Hem
<b>Fit</b>	Semi-Fitted
<b>Colours</b>	Ocean, Avocado, Blue, Charcoal, Chilli, Chocolate, Denim, Hot Pink, Lilac, Natural, Red, Royal, Rust, Teal, White



#### Ezylin® Overblouse

<b>2149</b>	<b>Short Sleeve</b>
<b>Size</b>	6 - 30
<b>Fabric</b>	100% Breathable Polyester
<b>Styling</b>	Revere Collar, Action Back, Wonder Button®, Peak Bottom
<b>Fit</b>	Semi-Fitted
<b>Colours</b>	Ocean, Teal, Avocado, Red, Blue, Royal, White





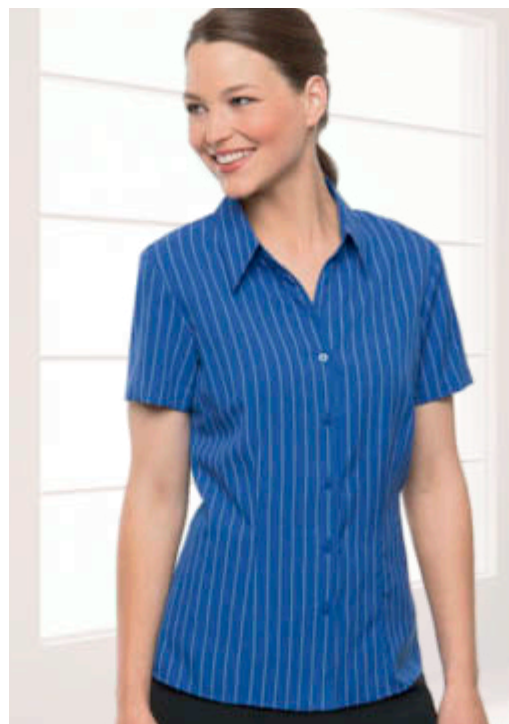
### Drift Print

<b>2192</b>	<b>Short Sleeve</b>
<b>Size</b>	6 - 30
<b>Fabric</b>	100% Polyester Aerosilver
<b>Styling</b>	Action Back, Feature Neck Line, Wonder Button®
<b>Fit</b>	Action Fit
<b>Colours</b>	Blue, Lilac, Navy, Teal



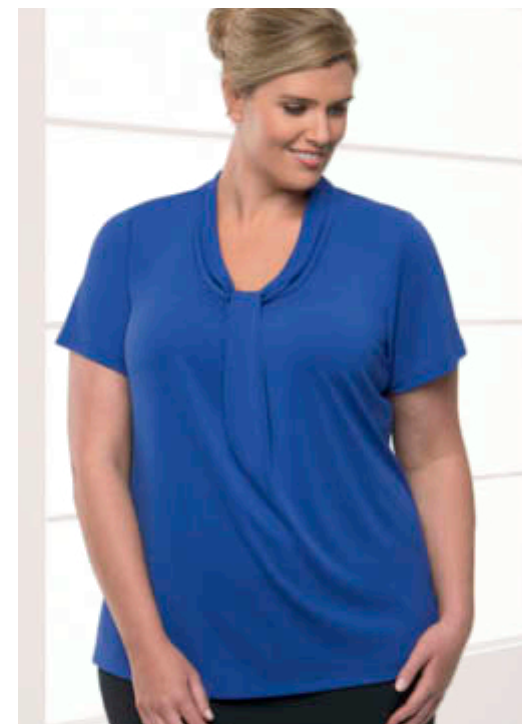
### City Stretch® Spot

<b>2173</b>	<b>Cap Sleeve</b>
<b>2172</b>	<b>3/4 Sleeve</b>
<b>Size</b>	6 - 30
<b>Fabric</b>	100% Polyester with Natural Stretch
<b>Styling</b>	Front Pintuck Feature, Wonder Button®
<b>Fit</b>	Semi-Fitted
<b>Colours</b>	Cobalt, Black, Blue, Grape, Lilac, Navy, Red, Teal



### Ezylin® Stripe

<b>2152</b>	<b>Short Sleeve</b>
<b>Size</b>	6 - 30
<b>Fabric</b>	100% Breathable Polyester
<b>Styling</b>	Open Neckline, Shaped Hem
<b>Fit</b>	Semi-Fitted
<b>Colours</b>	Royal, Avocado, Ocean, Red, Teal



### Pippa

<b>2222</b>	<b>Short Sleeve</b>
<b>Size</b>	XXS - 4X
<b>Fabric</b>	100% Polyester Matte Jersey
<b>Styling</b>	Soft Draped Neckline with Gathered Front
<b>Fit</b>	Semi-Fitted
<b>Colours</b>	Cobalt, Black, Charcoal, Grape, Jade, Navy, Red, White

## CityHealth® Stripe

“An easy care,  
Cotton rich fabric  
to keep you cool  
and comfortable.”

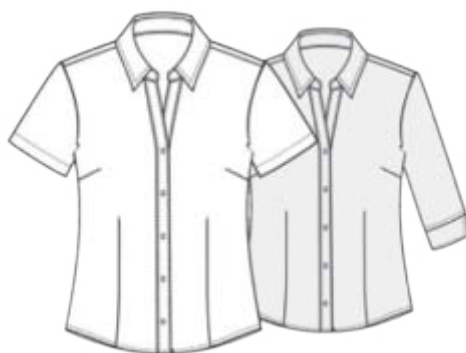






#### Ezylin®

<b>2145</b>	<b>3/4 Sleeve</b>
<b>2146</b>	<b>Short Sleeve</b>
<b>Size</b>	6 - 30
<b>Fabric</b>	100% Breathable Polyester
<b>Styling</b>	Open Neckline, Shaped Hem
<b>Fit</b>	Semi-Fitted
<b>Colours</b>	Royal, Avocado, Blue, Charcoal, Chilli, Chocolate, Denim, Hot Pink, Lilac, Natural, Ocean, Red, Rust, Teal, White



#### Ezylin®

<b>2146</b>	<b>Short Sleeve</b>
<b>2145</b>	<b>3/4 Sleeve</b>
<b>Size</b>	6 - 30
<b>Fabric</b>	100% Breathable Polyester
<b>Styling</b>	Open Neckline, Shaped Hem
<b>Fit</b>	Semi-Fitted
<b>Colours</b>	Royal, Avocado, Blue, Charcoal, Chilli, Chocolate, Denim, Hot Pink, Lilac, Natural, Ocean, Red, Rust, Teal, White



#### Ezylin® Overblouse

<b>2149</b>	<b>Short Sleeve</b>
<b>Size</b>	6 - 30
<b>Fabric</b>	100% Breathable Polyester
<b>Styling</b>	Revere Collar, Action Back, Wonder Button®, Peak Bottom
<b>Fit</b>	Semi-Fitted
<b>Colours</b>	Royal, Avocado, Blue, Ocean, Red, Teal, White



#### Ezylin®

<b>4145</b>	<b>Short Sleeve</b>
<b>Size</b>	S - 5XL
<b>Fabric</b>	100% Breathable Polyester
<b>Styling</b>	Wear In or Out, Feature Yoke
<b>Fit</b>	Sports Fit
<b>Colours</b>	Royal, Charcoal, Denim, Rust, Teal





# navy options

*you want*

## A RANGE OF DESIGNS & SIZES

From the style and cut of the shirts, we consider body width, height and range of movement in our designs.

- Shirts tailored specifically to fit a wide range of body shapes and sizes
- A range of designs to suit the occupational categories of your team
- Fabrics chosen to perform across a variety of environments
- Complimentary options available for men.



#### Micro Check

<b>2121</b>	<b>3/4 Sleeve</b>
<b>Size</b>	6 - 30
<b>Fabric</b>	55% Cotton, 45% Polyester
<b>Styling</b>	Button Through Front, Fold Back Cuff Option, Curved Hem
<b>Fit</b>	Semi-Fitted
<b>Colours</b>	Navy, Blue



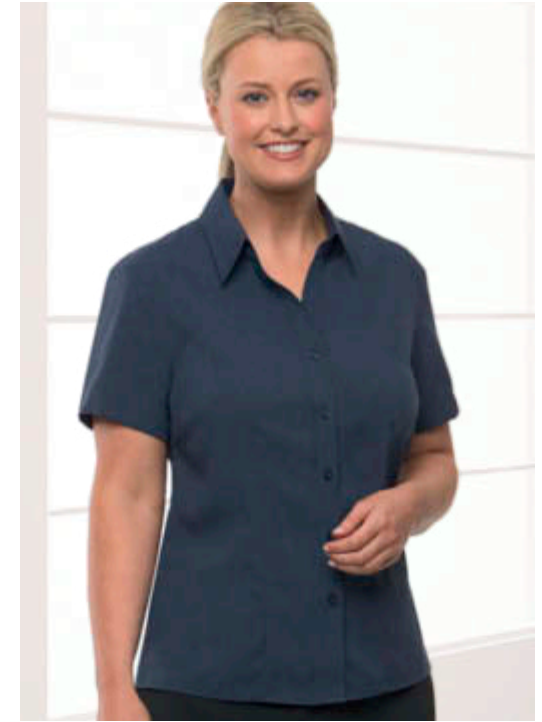
#### Micro Check

<b>4102 SS</b>	<b>Short Sleeve</b>
<b>4102 LS</b>	<b>Long Sleeve</b>
<b>Size</b>	S - 5XL
<b>Fabric</b>	55% Cotton, 45% Polyester
<b>Styling</b>	Button Down Collar, Single Chest Pocket, Twin Needle Construction
<b>Fit</b>	Full Cut
<b>Colours</b>	Navy, Blue



#### Ezylin®

<b>2145</b>	<b>3/4 Sleeve</b>
<b>2146</b>	<b>Short Sleeve</b>
<b>Size</b>	6 - 30
<b>Fabric</b>	100% Breathable Polyester
<b>Styling</b>	Open Neckline, Shaped Hem
<b>Fit</b>	Semi-Fitted
<b>Colours</b>	Denim, Avocado, Blue, Charcoal, Chilli, Chocolate, Hot Pink, Lilac, Natural, Ocean, Red, Royal, Rust, Teal, White



#### Ezylin®

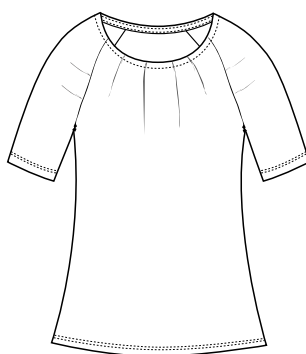
<b>2146</b>	<b>Short Sleeve</b>
<b>2145</b>	<b>3/4 Sleeve</b>
<b>Size</b>	6 - 30
<b>Fabric</b>	100% Breathable Polyester
<b>Styling</b>	Open Neckline, Shaped Hem
<b>Fit</b>	Semi-Fitted
<b>Colours</b>	Denim, Avocado, Blue, Charcoal, Chilli, Chocolate, Hot Pink, Lilac, Natural, Ocean, Red, Royal, Rust, Teal, White





### Ezylin®

<b>4145</b>	<b>Short Sleeve</b>
<b>Size</b>	S - 5XL
<b>Fabric</b>	100% Breathable Polyester
<b>Styling</b>	Wear in or Out, Feature Yoke
<b>Fit</b>	Sports Fit
<b>Colours</b>	Denim, Charcoal, Royal, Rust, Teal



### Lulu

<b>2228</b>	<b>Half Sleeve</b>
<b>Size</b>	XXS - 4X
<b>Fabric</b>	94% Polyester, 6% Spandex
<b>Styling</b>	Round Neckline with Tucks, Raglan Sleeve
<b>Fit</b>	Fitted
<b>Colours</b>	Navy, Black, Charcoal



### Pippa

<b>2222</b>	<b>Short Sleeve</b>
<b>Size</b>	XXS - 4XL
<b>Fabric</b>	100% Polyester Matte Jersey
<b>Styling</b>	Soft Draped Neckline with Gathered Front
<b>Fit</b>	Semi-Fitted
<b>Colours</b>	Navy, Black, Charcoal, Cobalt, Grape, Jade, Red, White

## Garments that work as hard as you do

### Styles designed for the active work environment.

Our range has been designed to suit the climate and environment in which you work and for each individual's unique shape and size.

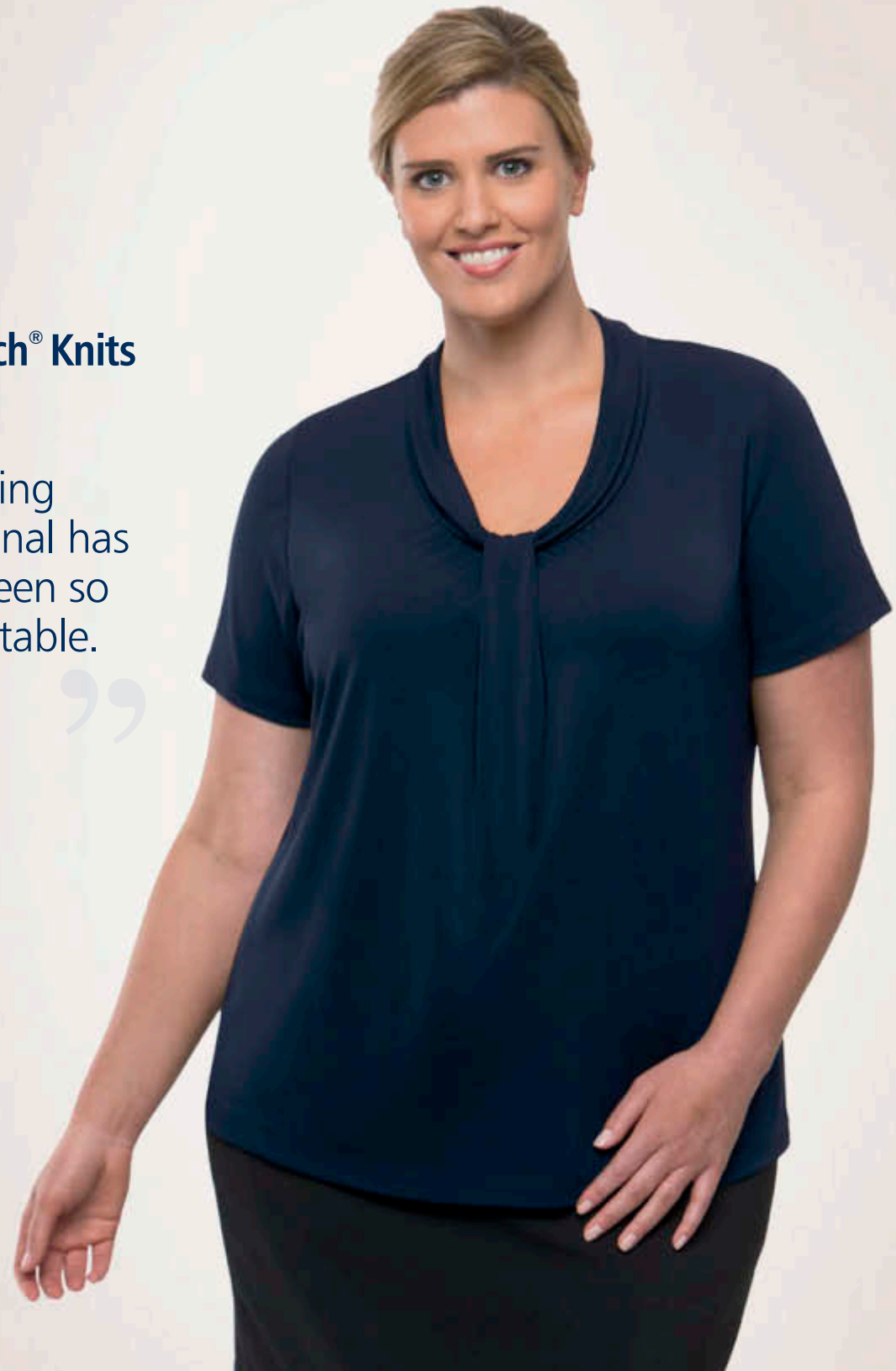
We have taken into consideration the physical nature of your role and also your requirements that the garments are easy care, comfortable and durable.

All our garments have been styled to fit your staff comfortably as they perform their duties whilst still looking good at the end of the day.

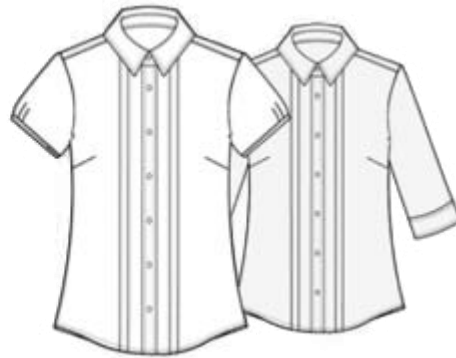
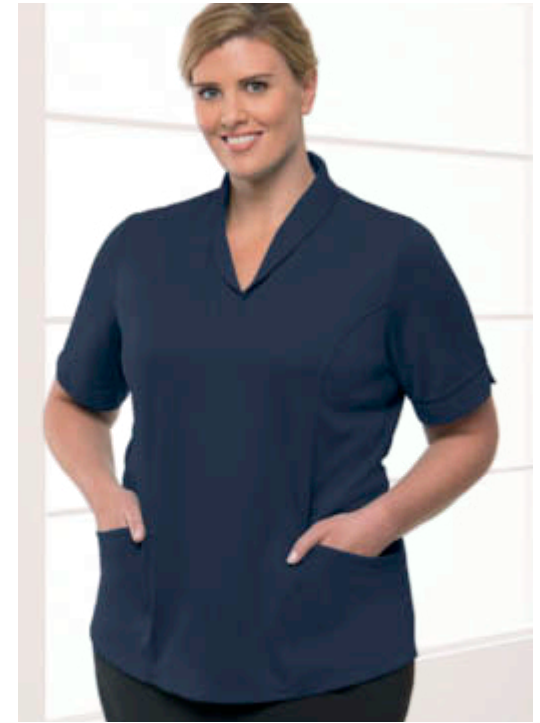


## City Stretch® Knits

“ Looking  
professional has  
never been so  
comfortable.”







### City Stretch® Spot

<b>2172</b>	<b>3/4 Sleeve</b>
<b>2173</b>	<b>Cap Sleeve</b>
<b>Size</b>	6 - 30
<b>Fabric</b>	100% Polyester with Natural Stretch
<b>Styling</b>	Front Pintuck Feature, Adjustable Cuff, Wonder Button®
<b>Fit</b>	Semi-Fitted
<b>Colours</b>	Navy, Black, Blue, Cobalt, Grape, Lilac, Red, Teal

### City Stretch® Spot

<b>2173</b>	<b>Cap Sleeve</b>
<b>2172</b>	<b>3/4 Sleeve</b>
<b>Size</b>	6 - 30
<b>Fabric</b>	100% Polyester with Natural Stretch
<b>Styling</b>	Front Pintuck Feature, Wonder Button®
<b>Fit</b>	Semi-Fitted
<b>Colours</b>	Navy, Black, Blue, Cobalt, Grape, Lilac, Red, Teal



### Drift Print

<b>2192</b>	<b>Short Sleeve</b>
<b>Size</b>	6 - 30
<b>Fabric</b>	100% Polyester Aerosilver
<b>Styling</b>	Action Back, Feature Neck Line, Wonder Button®
<b>Fit</b>	Action Fit
<b>Colours</b>	Navy, Blue, Lilac, Teal



### CityHealth® Active

<b>2230</b>	<b>Short Sleeve</b>
<b>Size</b>	XXS - 5X
<b>Fabric</b>	100% Polyester Aerosilver
<b>Styling</b>	Wear Out, Roll Collar, Double Pockets
<b>Fit</b>	Semi-Fitted
<b>Colours</b>	Navy, Lilac, Red, Royal, Teal





*you want*

## STYLE AND PRACTICALITY

With a 'no compromise' approach to style, our designs also consider the practical nature of your role.

- Designs to suit individual taste and roles, all within one colour palette
- Pockets are available on selected styles
- Unite the team with a powerful colour story
- Present a professional image with designs that your patients and customers will love.

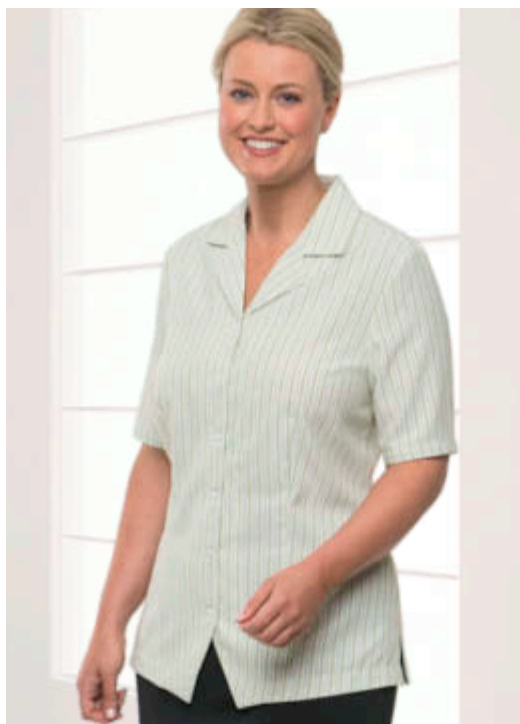


### Ezylin® Stripes

“ Designed to flatter all body shapes and keep you feeling confident throughout the day. ”







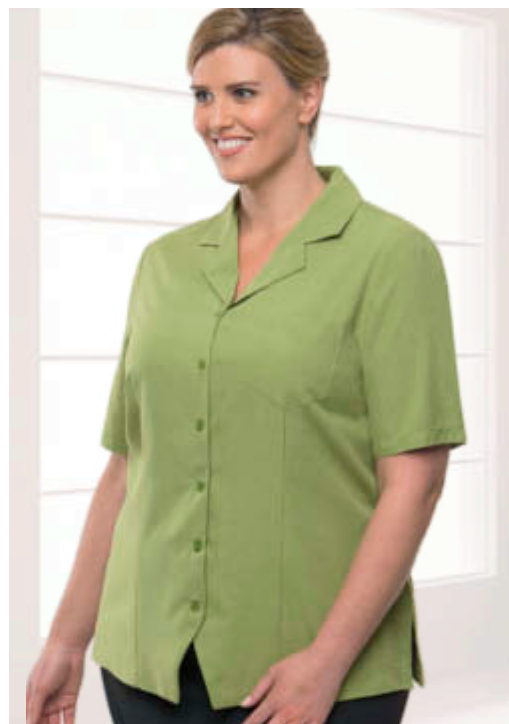
### Ezylin® Healthcare Stripe

<b>2153</b>	<b>Short Sleeve</b>
<b>Size</b>	6 - 30
<b>Fabric</b>	100% Breathable Polyester
<b>Styling</b>	Revere Collar, Action Back, Wonder Button®, Peak Bottom
<b>Fit</b>	Semi-Fitted
<b>Colours</b>	Avocado, Ocean, Red, Teal



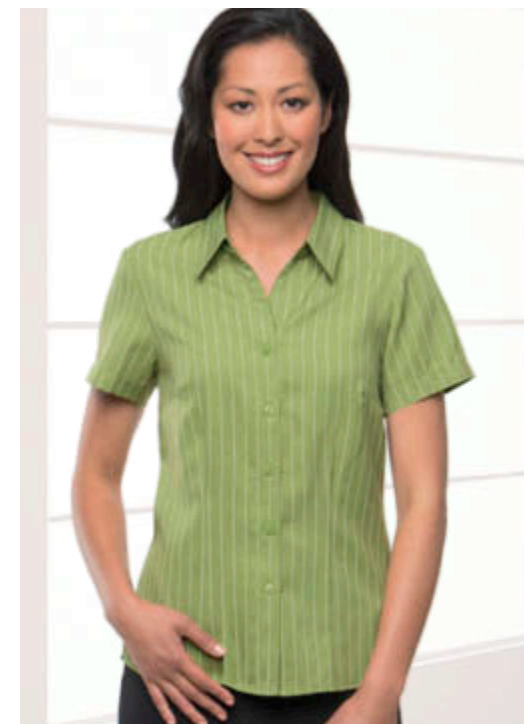
### Ezylin®

<b>2146</b>	<b>Short Sleeve</b>
<b>2145</b>	<b>3/4 Sleeve</b>
<b>Size</b>	6 - 30
<b>Fabric</b>	100% Breathable Polyester
<b>Styling</b>	Open Neckline, Shaped Hem
<b>Fit</b>	Semi-Fitted
<b>Colours</b>	Avocado, Blue, Charcoal, Chilli, Chocolate, Denim, Hot Pink, Lilac, Natural, Ocean, Red, Royal, Rust, Teal, White,



### Ezylin® Overblouse

<b>2149</b>	<b>Short Sleeve</b>
<b>Size</b>	6 - 30
<b>Fabric</b>	100% Breathable Polyester
<b>Styling</b>	Revere Collar, Action Back, Wonder Button®, Peak Bottom
<b>Fit</b>	Semi-Fitted
<b>Colours</b>	Avocado, Blue, Ocean, Red, Royal, Teal, White



### Ezylin® Stripe

<b>2152</b>	<b>Short Sleeve</b>
<b>Size</b>	6 - 30
<b>Fabric</b>	100% Breathable Polyester
<b>Styling</b>	Open Neckline, Shaped Hem
<b>Fit</b>	Semi-Fitted
<b>Colours</b>	Avocado, Ocean, Red, Royal, Teal,





*you want*

## A COLOUR STORY

Promote a unified team look within one colour palette whilst enjoying a sense of individuality.

- Range of stylish colours ideal for the healthcare sector
- Select individual designs within a colour range
- Colours to suit all roles in healthcare including department based work environments
- Mix and match styles across two complimentary colour ranges.



### Ezylin®

2145	3/4 Sleeve
2146	Short Sleeve
Size	6 - 30
Fabric	100% Breathable Polyester
Styling	Open Neckline, Shaped Hem
Fit	Semi-Fitted
Colours	Red, Avocado, Blue, Charcoal, Chilli, Chocolate, Denim, Hot Pink, Lilac, Natural, Ocean, Royal, Rust, Teal, White



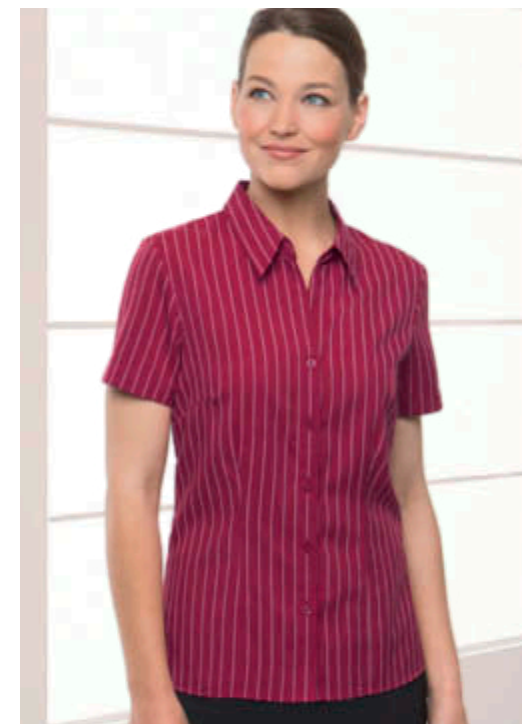
### Ezylin®

2146	Short Sleeve
2145	3/4 Sleeve
Size	6 - 30
Fabric	100% Breathable Polyester
Styling	Open Neckline, Shaped Hem
Fit	Semi-Fitted
Colours	Red, Avocado, Blue, Charcoal, Chilli, Chocolate, Denim, Hot Pink, Lilac, Natural, Ocean, Royal, Rust, Teal, White



### Ezylin® Overblouse

2149	Short Sleeve
Size	6 - 30
Fabric	100% Breathable Polyester
Styling	Revere Collar, Action Back, Wonder Button®, Peak Bottom
Fit	Semi-Fitted
Colours	Red, Avocado, Blue, Ocean, Royal, Teal, White



### Ezylin® Stripe

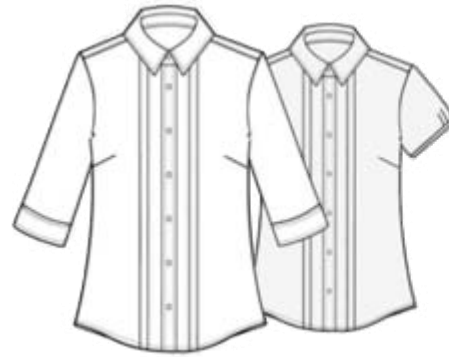
2152	Short Sleeve
Size	6 - 30
Fabric	100% Breathable Polyester
Styling	Open Neckline, Shaped Hem
Fit	Semi-Fitted
Colours	Red, Avocado, Ocean, Royal, Teal





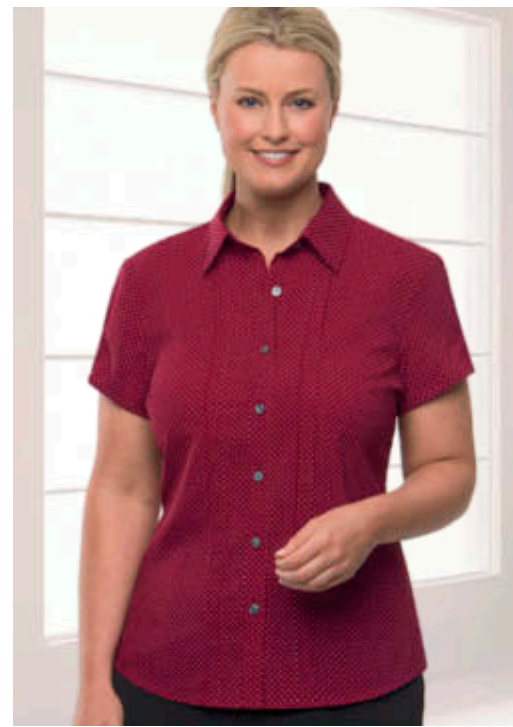
### CityHealth® Active

<b>2230</b>	<b>Short Sleeve</b>
<b>Size</b>	XXS - 5X
<b>Fabric</b>	100% Polyester Aerosilver
<b>Styling</b>	Wear Out, Roll Collar, Double Pockets
<b>Fit</b>	Semi-Fitted
<b>Colours</b>	Red, Lilac, Navy, Royal, Teal



### City Stretch® Spot

<b>2172</b>	<b>3/4 Sleeve</b>
<b>2173</b>	<b>Cap Sleeve</b>
<b>Size</b>	6 - 30
<b>Fabric</b>	100% Polyester with Natural Stretch
<b>Styling</b>	Front Pintuck Feature, Adjustable Cuff, Wonder Button®
<b>Fit</b>	Semi-Fitted
<b>Colours</b>	Red, Black, Blue, Cobalt, Grape, Lilac, Navy, Teal



### City Stretch® Spot

<b>2173</b>	<b>Cap Sleeve</b>
<b>2172</b>	<b>3/4 Sleeve</b>
<b>Size</b>	6 - 30
<b>Fabric</b>	100% Polyester with Natural Stretch
<b>Styling</b>	Front Pintuck Feature, Wonder Button®
<b>Fit</b>	Semi-Fitted
<b>Colours</b>	Red, Black, Blue, Cobalt, Grape, Lilac, Navy, Teal

## You need to maintain a team environment

### Reinforce a strong unified image.

Start with your base colour, this may be your corporate brand colour or department specific colour.

Choose from our range of colours, Grape, Teal, White, Blue, Navy, Avocado, Red and Charcoal.

The Healthcare industry is often divided into occupational categories. As colour is the sole identification tool between staff, clients and patients, we offer a range of styles and designs within a single colour story, ideal for differentiation with uniforms.

Tailored and fashionable designs with complimentary colours mean a positive response from staff.

## CityHealth® Active

“ A lightweight,  
breathable, stretch fabric  
featuring anti-bacterial  
protection. ”





### Ezylin® Healthcare Stripe

<b>2153</b>	<b>Short Sleeve</b>
<b>Size</b>	6 - 30
<b>Fabric</b>	100% Breathable Polyester
<b>Styling</b>	Revere Collar, Action Back, Wonder Button®, Peak Bottom
<b>Fit</b>	Semi-Fitted
<b>Colours</b>	Red, Avocado, Ocean, Teal



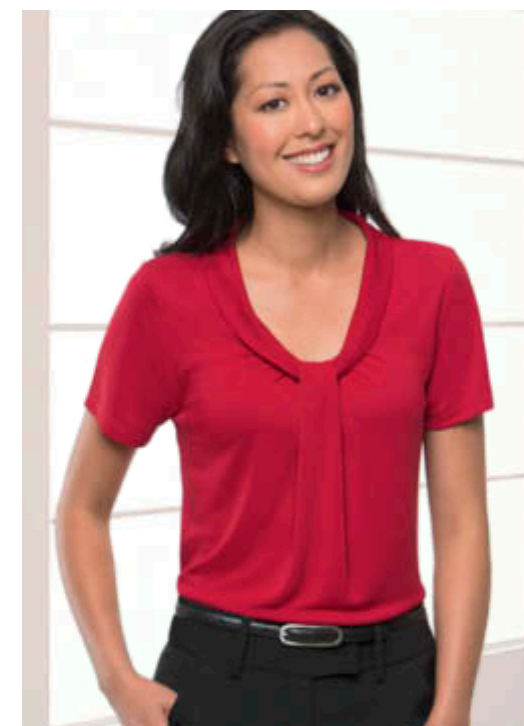
### Ezylin®

<b>2145</b>	<b>3/4 Sleeve</b>
<b>2146</b>	<b>Short Sleeve</b>
<b>Size</b>	6 - 30
<b>Fabric</b>	100% Breathable Polyester
<b>Styling</b>	Open Neckline, Shaped Hem
<b>Fit</b>	Semi-Fitted
<b>Colours</b>	Chilli, Avocado, Blue, Charcoal, Chocolate, Denim, Hot Pink, Lilac, Natural, Ocean, Red, Royal, Rust, Teal, White



### Ezylin®

<b>2146</b>	<b>Short Sleeve</b>
<b>2145</b>	<b>3/4 Sleeve</b>
<b>Size</b>	6 - 30
<b>Fabric</b>	100% Breathable Polyester
<b>Styling</b>	Open Neckline, Shaped Hem
<b>Fit</b>	Semi-Fitted
<b>Colours</b>	Chilli, Avocado, Blue, Charcoal, Chocolate, Denim, Hot Pink, Lilac, Natural, Ocean, Red, Royal, Rust, Teal, White



### Pippa

<b>2222</b>	<b>Short Sleeve</b>
<b>Size</b>	XXS - 4X
<b>Fabric</b>	100% Polyester Matte Jersey
<b>Styling</b>	Soft Draped Neckline with Gathered Front
<b>Fit</b>	Semi-Fitted
<b>Colours</b>	Red, Black, Charcoal, Cobalt, Grape, Jade, Navy, White





# charcoal options

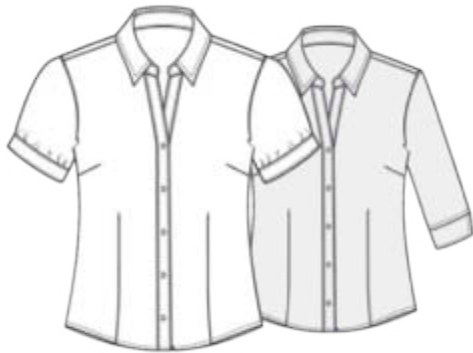
*you want*

## QUICK DELIVERY

With every style, size and colour available on stock service, you can be assured your order will be processed quickly.

- Reliable stocks and ongoing availability
- We carry large stocks to ensure your order is delivered on time
- A dedicated customer service team to ensure quick responses to your enquiry.

## charcoal options



### Shadow Stripe

<b>2104</b>	<b>Cap Sleeve</b>
<b>2144</b>	<b>3/4 Sleeve</b>
<b>Size</b>	6 - 30
<b>Fabric</b>	55% Cotton, 45% Polyester
<b>Styling</b>	Open Neckline, Wonder Button® Adjustable Cuff, Shaped Hem
<b>Fit</b>	Semi-Fitted
<b>Colours</b>	Charcoal, Blue

### Shadow Stripe

<b>2144</b>	<b>3/4 Sleeve</b>
<b>2104</b>	<b>Cap Sleeve</b>
<b>Size</b>	6 - 30
<b>Fabric</b>	55% Cotton, 45% Polyester
<b>Styling</b>	Open Neckline, Wonder Button® Shaped Hem
<b>Fit</b>	Semi-Fitted
<b>Colours</b>	Charcoal, Blue



### Lulu

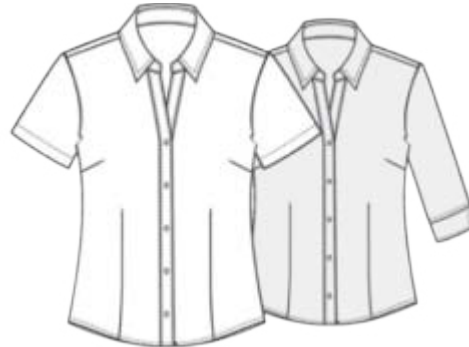
<b>2228</b>	<b>Half Sleeve</b>
<b>Size</b>	XXS - 4X
<b>Fabric</b>	94% Polyester, 6% Spandex
<b>Styling</b>	Round Neckline with Tucks, Raglan Sleeve
<b>Fit</b>	Fitted
<b>Colours</b>	Charcoal, Black, Navy



### Pippa

<b>2222</b>	<b>Short Sleeve</b>
<b>Size</b>	XXS - 4X
<b>Fabric</b>	100% Polyester Matte Jersey
<b>Styling</b>	Soft Draped Neckline with Gathered Front
<b>Fit</b>	Semi-Fitted
<b>Colours</b>	Charcoal, Black, Cobalt, Grape, Jade, Navy, Red, White





#### Ezylin®

<b>2145</b>	<b>3/4 Sleeve</b>
<b>2146</b>	<b>Short Sleeve</b>
<b>Size</b>	6 - 30
<b>Fabric</b>	100% Breathable Polyester
<b>Styling</b>	Open Neckline, Shaped Hem
<b>Fit</b>	Semi-Fitted
<b>Colours</b>	Charcoal, Avocado, Blue, Chilli, Chocolate, Denim, Hot Pink, Lilac, Natural, Ocean, Red, Royal, Rust, Teal, White

#### Ezylin®

<b>2146</b>	<b>Short Sleeve</b>
<b>2145</b>	<b>3/4 Sleeve</b>
<b>Size</b>	6 - 30
<b>Fabric</b>	100% Breathable Polyester
<b>Styling</b>	Open Neckline, Shaped Hem
<b>Fit</b>	Semi-Fitted
<b>Colours</b>	Charcoal, Avocado, Blue, Chilli, Chocolate, Denim, Hot Pink, Lilac, Natural, Ocean, Red, Royal, Rust, Teal, White

#### Ezylin®

<b>4145</b>	<b>Short Sleeve</b>
<b>Size</b>	S - 5XL
<b>Fabric</b>	100% Breathable Polyester
<b>Styling</b>	Wear In or Out, Feature Yoke
<b>Fit</b>	Sports Fit
<b>Colours</b>	Charcoal, Denim, Royal, Rust, Teal

## Fast and reliable delivery

### Stock Service.

We carry large stocks to ensure your order is quickly processed and delivered on time. All styles are available on Stock Service.

### Service and Quality.

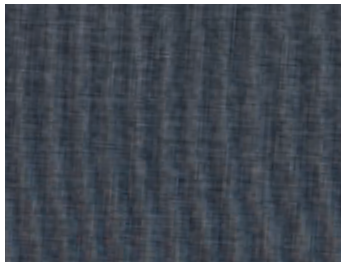
As a local Australian team it is our ethos to ensure all garments are of quality craftsmanship and delivered to you when you need them.

### Commitment.

Our philosophy is simple, "understand what the client needs and deliver the very best - with no exceptions".

### Experience.

With 88 years experience in supplying shirts to the Australian market, our position remains as the most trusted and leading innovative provider of uniforms for health professionals.



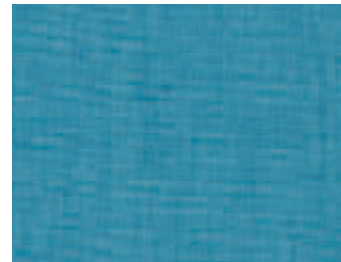
**CHARCOAL**  
STYLE: 2145, 2146, 4145



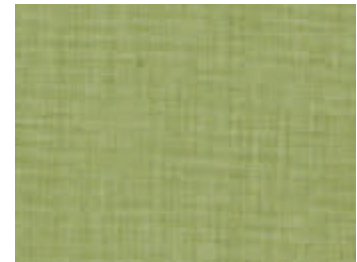
**DENIM**  
STYLE: 2145, 2146, 4145



**ROYAL**  
STYLE: 2145, 2146, 2149, 4145



**TEAL**  
STYLE: 2145, 2146, 2149, 4145



**AVOCADO**  
STYLE: 2145, 2146, 2149



**BLUE**  
STYLE: 2145, 2146, 2149



**OCEAN**  
STYLE: 2145, 2146, 2149



**WHITE**  
STYLE: 2145, 2146, 2149



**RED**  
STYLE: 2145, 2146, 2149



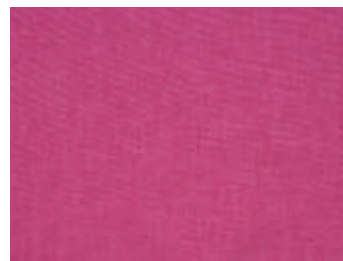
**CHILLI**  
STYLE: 2145, 2146



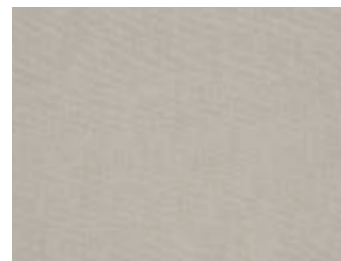
**LILAC**  
STYLE: 2145, 2146



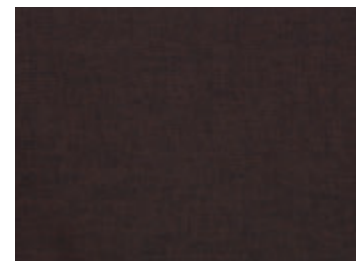
**RUST\***  
STYLE: 2145, 2146, 4145



**HOT PINK\***  
STYLE: 2145, 2146



**NATURAL\***  
STYLE: 2145, 2146



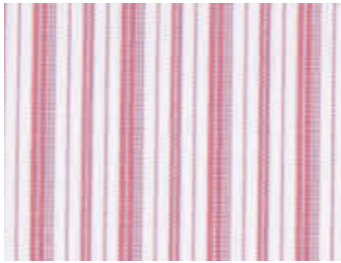
**CHOCOLATE\***  
STYLE: 2145, 2146

\* Colour not featured in catalogue



## Ezylin® Healthcare Stripe

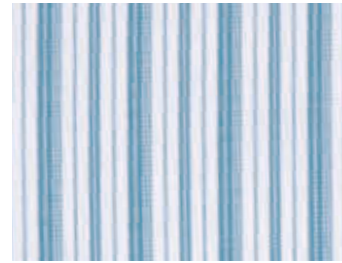
100% Breathable Polyester that keeps you cool and dry.  
Wrinkle free, easy care, quick drying and extremely durable.



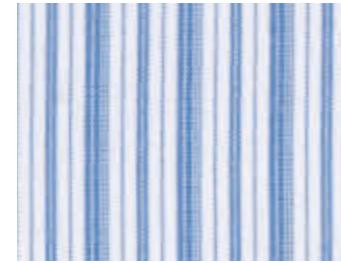
**RED**  
STYLE: 2153



**AVOCADO**  
STYLE: 2153



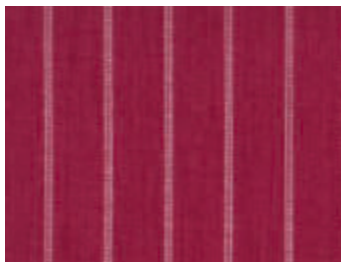
**TEAL**  
STYLE: 2153



**OCEAN**  
STYLE: 2153

## Ezylin® Stripe

100% Breathable Polyester that keeps you cool and dry.  
Wrinkle free, easy care, quick drying and extremely durable.



**RED**  
STYLE: 2152



**AVOCADO**  
STYLE: 2152



**TEAL**  
STYLE: 2152



**OCEAN**  
STYLE: 2152



**ROYAL**  
STYLE: 2152

## Drift Print

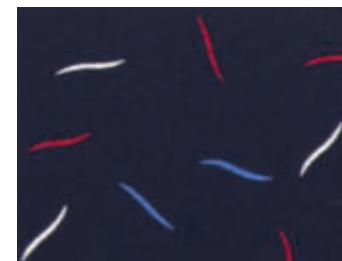
100% Polyester AeroSilver® keeps you cool,  
dry and offers anti-bacterial protection.



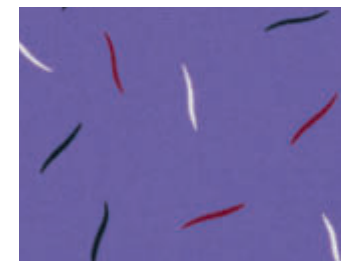
**BLUE**  
STYLE: 2192



**TEAL**  
STYLE: 2192



**NAVY**  
STYLE: 2192



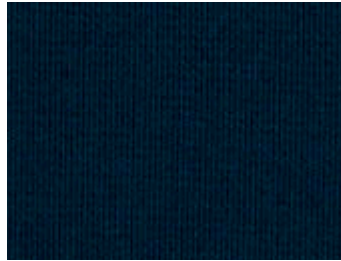
**LILAC**  
STYLE: 2192

## Pippa Knit

100% Polyester Matte Jersey with natural stretch.  
Easy care, minimal or no ironing.



**CHARCOAL**  
STYLE: 2222



**NAVY**  
STYLE: 2222



**WHITE**  
STYLE: 2222



**RED**  
STYLE: 2222



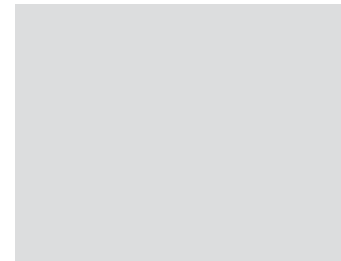
**JADE**  
STYLE: 2222



**GRAPE**  
STYLE: 2222



**COBALT**  
STYLE: 2222



**BLACK**  
STYLE: 2222

## CityHealth<sup>®</sup> Active

100% Polyester AeroSilver<sup>®</sup> keeps you cool,  
dry and offers anti-bacterial protection.



**TEAL**  
STYLE: 2230



**LILAC**  
STYLE: 2230



**NAVY**  
STYLE: 2230



**ROYAL**  
STYLE: 2230

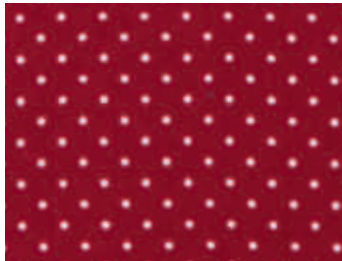


**RED**  
STYLE: 2230



## City Stretch® Spot

100% Polyester with natural stretch.  
Lightweight, wrinkle free, easy care and extremely durable.



**RED**  
STYLE: 2172, 2173



**BLACK**  
STYLE: 2172, 2173



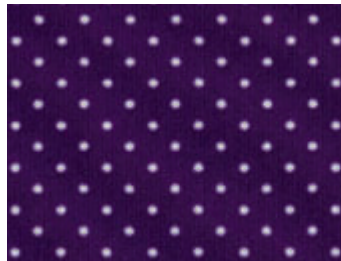
**TEAL**  
STYLE: 2172, 2173



**BLUE**  
STYLE: 2172, 2173



**LILAC**  
STYLE: 2172, 2173



**GRAPE**  
STYLE: 2172, 2173



**COBALT**  
STYLE: 2172, 2173



**NAVY**  
STYLE: 2172, 2173

## Lulu

94% Polyester, 6% Spandex  
A lightweight, cool and wrinkle free fabric.



**CHARCOAL**  
STYLE: 2228



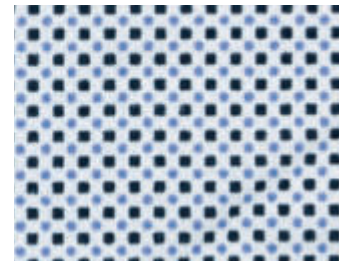
**NAVY**  
STYLE: 2228



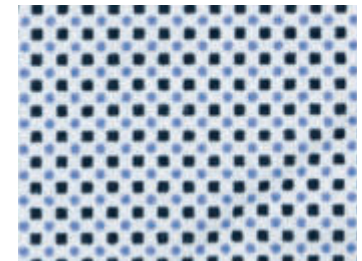
**BLACK**  
STYLE: 2228

## Pippa Print

94% Polyester  
6% Spandex



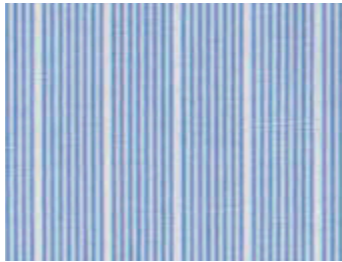
**WHITE**  
STYLE: 2223



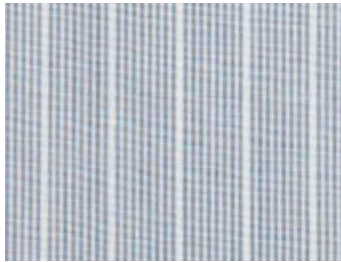
**WHITE**  
STYLE: 2224

## Shadow Stripe

55% Cotton  
45% Polyester



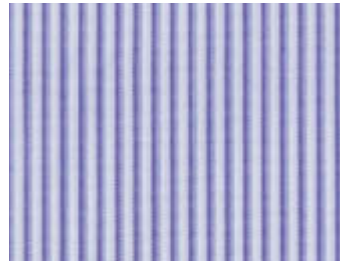
BLUE  
STYLE: 2104, 2144, 4104



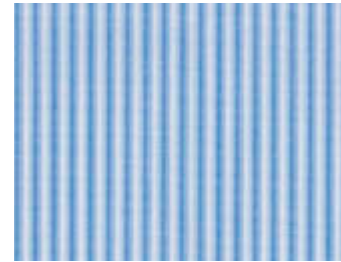
CHARCOAL  
STYLE: 2104, 2144, 4104

## CityHealth<sup>®</sup> Stripe

55% Cotton  
45% Polyester



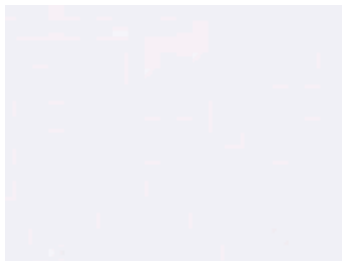
LILAC  
STYLE: 2240, 4240



BLUE  
STYLE: 2240, 4240

## Corporate Essentials

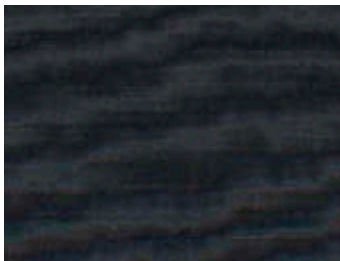
65% Cotton  
35% Polyester



WHITE  
STYLE: 2100, 4100



SKY  
STYLE: 2100, 4100



CHARCOAL\*  
STYLE: 2100, 4100

## Micro Check

55% Cotton  
45% Polyester



BLUE  
STYLE: 2121, 4102



NAVY  
STYLE: 2121, 4102

\* Colour not featured in catalogue



# Garment Size Guides

## Women's Sizing Guide

Size	6	8	10	12	14	16	18	20	22	24	26	28	30
Bust (cm)	83	88	93	98	103	109	115	121	127	133	139	145	151

## Women's Knit Guide

XXS	XS	S	M	L	1X	2X	3X	4X	5X
6	8-10	10-12	14	16	18-20	20-22	22-24	24-26	26-28



## Women's Fit Guide

### ACTION FIT

This is a more relaxed fit, straight through the body and longer. It is generally worn out not tucked in. Suitable for the slightly fuller figure.

### SEMI FITTED

This style is shaped through the body with room to move. It is neither too slim nor too loose and can be worn tucked or untucked. This fit is suitable for most body types.

### FITTED

A slimmer silhouette that fits more closely to the body.

## Men's Fit Guide

### FULL CUT

This is the most generous of all fits. All garments have a box pleat in the back yoke for extra movement.

### CLASSIC FIT

Very similar to the Full Cut but narrower in the shoulders and slightly slimmer in the waist. Two side pleats in the back yoke.

### TAILORED FIT

Slightly tapered through the body but still quite generous. Suitable for most body shapes. No pleats in the back yoke.

### SPORTS FIT

Similar to our Tailored Fit but has a straighter block which is more generous through the waist. No pleats in back.

### CITY FIT

Slightly slimmer than our Sports Fit through the chest, shoulders and waist. Longer in length to stay tucked in. Two side pleats in the back yoke.

## Men's Sizing Guide

Neck Size	38	39	40	41	42	43	44	46	48	50	52
Body Size	S	M	M	L	L	XL	XL	2XL	3XL	4XL	5XL
Chest (cm)	95	100	100	105	105	110	110	115	120	125	130

Note: Size charts are body measurements. The garment will measure larger than the body to allow ease and comfort.





[www.citycollection.com.au](http://www.citycollection.com.au)

**CITYHEALTH<sup>®</sup>**

by **CITYCOLLECTION**  
THE CORPORATE SHIRT SPECIALIST

- All garments are available on stock service.
- Colours are as close as possible to actual fabric colours but should be used as a guide only.
- City Collection reserve the right to update and improve the styling of items featured in our catalogue.
- The design and layout of this catalogue is subject to copyright©.